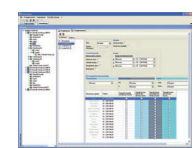


SmartLine020

Conventional control panels with 2 zones, or 4 zones expandable to 20



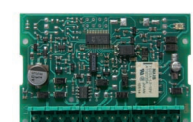
SmartLetUSee/LCD



SmartLeague



SmartLetLoose/ONE



SmartLine/8Z

The SmartLine020 conventional fire-detection control panel series offers a 2 zone non-expandable model and a 4 zone expandable model expandable to 20 zones by means of SmartLine/8Z 8-zone expansion boards. The extreme compactness and ease of programming and operation makes this control panel ideal for small applications, where fast installation and programming are among the most important aspects of the application.

The trimness of this control panel in no way shackles its advanced technology. SmartLine020 provides housing for a SmartLetLoose/ONE fire extinction board.

This board is EN12094-1 compliant, and offers a complete range of functions for fire extinguishing system management.

The SmartLine020 control panel has 2 supervised outputs for alarm and fault signaling (the efficiency of these outputs is monitored continuously).

It can detect and diagnose anomalous conditions and provide an ample spectrum of visual signals: alarm, pre-alarm, fault, bypass, test, monitor.

The control panel provides 1 terminal per zone configurable as: open-collector output, supervised output, supervised input, gas detector input with 4-20mA interface, gas detector input with open-collector output interface. This flexibility notably increases the application panorama of the SmartLine020.

System information is provided through the graphic display and LEDs on the control panel.

The SmartLine020 manages an RS485 BUS for remote connections.

The RS485 BUS supports 4 remote-control Repeater panels (Model: SmartLetUSee/LCD).

Repeater panels replicate all the fire alarm system data and allow users to access and control the system in accordance with their authorized access level.

Programming the system from the control panel is straightforward and trouble-free thanks to the easy-to-follow instructions on the display,

The system can also be programmed using SmartLeague software application (runs under Windows). This method simplifies the programming procedure even more and allows the installer to program the system on a home or office computer and download the pre-set data at a later time via RS232 serial port connection.

Features and Technical specifications

- Conventional fire-detection control panel
- Available with 2 zone or 4 zone expandable to 20
- EN54 Approved
- EN12094-1 Approved (Fire extinction)
- Supports up to 32 devices per zone
- Manages SmartLetLoose/ONE Fire Extinction board (EN12094-1 Approved)
- Supports 4 remote-control Repeater panels
- 1 supervised alarm output (NAC)
- 1 output for communicator/dialler activation
- 1 dry-contact alarm output
- 1 dry-contact fault output
- 1 power supply output
- 1 resettable power supply output
- 1 terminal per zone configurable as: open-collector output, supervised output, supervised input, gas detector input with 4-20mA interface, gas detector input with open-collector output interface.
- Battery shutdown relay for deep discharge conditions
- Backlit graphic display for easy management of Installer/User interface
- Navigation keys for easy access to menu options
- Fast keys (Silence, Reset, Evacuate, Investigate)
- RS485 BUS for Repeater panel connections
- Beeper (provides audible signals)
- RS232 connector for uploading/downloading data
- Programming software (runs under Windows)
- Easy system programming from the control panel
- Access key for Level 2 functions (EN54 compliant)
- On-board connector for Thermal probe (accessory item).
- Battery efficiency test
- Extensive application of SMD reflux technology for higher reliability
- Metal box
- Mains power supply 230Vac \pm 10%
- Switching power supply/battery charger 1.4A @ 27.6Vdc
- Battery housing for two 7Ah, 12V batteries
- Dimensions (HxWxD): 325x325x80mm
- Weight (without batteries): 3Kg

Features and Technical specifications of the SmartLetLoose/ONE Fire Extinction board

- EN12094-1 Approved (Fire extinction)
- Microcontroller board supervised by the CPU
- Fast keys to disable the fire extinguishing system: automatic mode and manual mode
- System LEDs (status, disabled, faults)
- Supervised terminals for manual fire extinction commands
- Supervised terminals for STOP fire extinction commands
- Supervised terminals for pressure switch control
- Output for fire extinguishing system activation
- Output for signaling activation (pre-extinction)
- Output for fire extinction "running" or "ended" signals (programmable)

Order Codes

SmartLine020-02: non-expandable 2 zone conventional control panel

SmartLine020-04: conventional control panel with 4 zone expandable to 20

SmartLine/8Z: 8 zone expansion board

SmartLetLoose/ONE: Fire Extinction board (1 channel)

SmartLetUSee/LCD: Remote-control Repeater panel

SmartLeague: Programming and management software for INIM products runs under Windows™

Link232F9F9: RS232 cable link between PC and INIM devices

LinkUSBAB: USB cable link between PC and INIM devices

IPS24140: Switching power supply/battery charger 1.4A@27.6Vdc

ProbeTH: Thermal probe. This device protects the battery against overheating and consequent permanent damage.

